

ELEVATION REFERENCE
EL. $\pm 0'-0"$ = EL. 845.00 U.S.G.S. DATUM

DIMENSIONS
DIMENSIONS ARE GIVEN FROM FACE OF MASONRY TO FACE OF MASONRY, OR TO CENTER OF MASONRY OPENING, UNLESS NOTED OTHERWISE.

GENERAL
REFER TO 1/4" SCALE UNIT FLOOR PLANS FOR FINISHED DIMENSIONS, INTERIOR DOOR NUMBERS, AND NOTES REGARDING UNIT CONSTRUCTION.


SEE SHEETS A4.1 FOR ENLARGED LOBBY PLAN
SEE SHEETS A4.2 FOR ENLARGED GUESTROOM PLANS

REFER TO HOLIDAY INN STANDARDS MANUAL FOR MINIMUM INTERIOR FINISH REQUIREMENTS

SYMBOLS

 WHEEL CHAIR ACCESSIBLE

 HEARING LOSS ACCESSIBLE

 **ELEVATOR**

CAPACITY: 2,500 LBS.
CAB SIZE: 6'-8" x 4'-3" (VERIFY W/ SHOP DRAWINGS)
DOOR SIZE: 3'-6" OPENING

ELEVATOR CAB, DOOR & CONTROLS SHALL COMPLY WITH APPLICABLE A.N.S.I. & A.D.A. ACCESSIBILITY STANDARDS. FIRE SERVICE AND EMERGENCY AMENITIES SHALL BE PROVIDED AS REQUIRED BY LOCAL CODES.

ELEVATOR PIT:
PROVIDE DAMPPROOFING AT EXTERIOR OF FOUNDATION WALLS & WATERSTOP AT FOOTINGS, ENTIRE PERIMETER OF ELEVATOR PIT

ELEVATOR SHAFT DIMENSIONS:
THE FINAL DIMENSIONS OF THE ELEVATOR SHAFT & PIT DEPTH MUST BE COORDINATED WITH THE ELEVATOR SHOP DRAWINGS PRIOR TO CONSTRUCTION.

FLOOR DESIGNATION SIGNAGE:
ALL ELEVATOR HOSIWAY ENTRANCES SHALL HAVE RAISED AND BRAILLE FLOOR DESIGNATIONS PROVIDED ON BOTH JAMBS. THE CENTERLINE OF THE CHARACTERS SHALL BE 80 IN. ABOVE FINISH FLOOR. THE CHARACTERS SHALL BE 2 IN. HIGH. THE SIGNAGE PLATES SHALL BE PERMANENTLY AFFIXED TO THE JAMBS.

 **ELEVATOR EQUIPMENT ROOM:**
FIRE RATING: 2 HOUR FIRE RATED ROOM ENCLOSURE
PIPES / DUCTS: NO PIPES OR DUCTS CONTAINING GASES, VAPORS, OR WATER, ETC., MAY BE LOCATED WITHIN THE EQUIPMENT ROOM CONCEAL PIPING ABOVE W/ GYP BD CEILING & METAL DRIP PAN AS REQ'D.
VENTILATION: PROVIDE PROPER VENTILATION TO COMPLY WITH APPLICABLE CODES

 **STEEL LADDER - PROVIDED BY ELEVATOR CONTRACTOR**


 AREA OF REFUGE - MINIMUM 2'-6"x4'-0" CLEAR FLOOR AREA
NO PIPES OR FUTURES SHALL BE INSTALLED WITH-IN THIS AREA

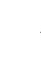
 FIRE EXTINGUISHER & CABINET
MULTI-PURPOSE EXTINGUISHER FOR CLASS A, B, C, FIRES. CABINET SHALL BE FIRE RATED, SEMI-RECESSED, WITH A GLASS DOOR. TOP OF CABINET 48" A.F.F.


 ATTIC ACCESS HATCH - 2'-6" x 3'-0" - 1 HOUR FIRE RATED PROVIDE STEEL ACCESS LADDER TO COMPLY WITH CODE.

 2 HOUR FIRE RATED SHAFT ENCLOSURE - TYPICAL
3'-6" HIGH WOOD GUARD RAIL W/ LESS THAN 4" CLEAR BETWEEN BALUSTERS
SEE GENERAL NOTES ON SHEET A6.2 FOR LOAD REQUIREMENTS.

 FULL HEIGHT CLEAR MIRROR IN WOOD FRAME FASTNED TO WALL.


 RECESSED PEDIMAT TO BE FLUSH WITH ADJACENT TILE FLOOR. INSTALL PER MANUFACTURERS SPECIFICATIONS.


 CFRC COLUMN ENCLOSURE OVER MASONRY BASE.

 2'-0" DIA. SHEET METAL LINEN CHUTE WITH SELF-CLOSING "B" LABEL DOOR. LINEN CHUTE SHALL BE ENCLOSED WITH A 2 HOUR FIRE RATED SHAFT ENCLOSURE.

 SAFE DEPOSIT BOXES LOCATED UNDER COUNTER.

 KNOX BOX LOCATION, COORDINATE WITH FIRE DEPARTMENT. SIGN INCLUDING 8" REFLECTIVE FLOOR NUMBER MOUNTED 5'-0" ABOVE THE LANDING REFER TO A6.2 FOR ADDITIONAL SIGN REQUIREMENTS.

 FOLD UP BABY CHANGING STATION.

 30" HIGH 24" DEEP WORKSPACE COUNTERTOP. PROVIDE 30"W BY 27"H CLEAR KNEE SPACE FOR ACCESSIBLE USE.

 SLOPE FLOOR TO FLOOR DRAIN. REFER TO PLUMBING DRAWINGS

REFER TO SHEET A6.1 FOR COMPLETE CONSTRUCTION DETAILS & COMPONENTS.	
A	1 HOUR FIRE RATED - 5 1/4" INTERIOR PARTITION, MECHANICAL ROOMS, STORAGE ROOMS, & GUESTROOM DEMISING
B	2 HOUR FIRE RATED - 5 1/4" INTERIOR PARTITION, ELEVATOR SHAFT & FAN ROOM
C	1 HOUR FIRE RATED - 7 1/4" INTERIOR PARTITION, PLUMBING WALL
D	NOT RATED - 4 3/4" INTERIOR PARTITION, GUESTROOM BATHROOM (WITHIN GUESTROOMS)
E	2 HOUR FIRE RATED - 3 1/2" INTERIOR PARTITION, TOILET EXHAUST SHAFT, LINEN CHUTE, & DRYER VENT SHAFT
F	1 HOUR FIRE RATED - 4 3/4" INTERIOR PARTITION, CORRIDOR WALLS
G	1 HOUR FIRE RATED - 4 3/4" INTERIOR PARTITION, DRAFT STOP & STAIR ENCLOSURE
H	1 HOUR FIRE RATED - 4 3/4" INTERIOR PARTITION, EXTERIOR WALLS

© COPYRIGHT HAYLOCK DESIGN, INC.
REPRODUCTION OF THE MATERIAL HEREIN, IN PART OR IN
WHOLE, WITHOUT WRITTEN CONSENT OF HAYLOCK DESIGN, INC.,
IS IN VIOLATION OF THE COPYRIGHT LAWS OF THE UNITED
STATES AND WILL BE SUBJECT TO LEGAL PROSECUTIONS.

HDI **HAYLOCK DESIGN, inc.**
Architects + Designers

1800 Nations Drive
Suite 201
Gurnee, Illinois 60031

Phone 847-336-8800
Fax 847-336-8836

© 2011

**15707 Oak Grove Blvd.
Lakeway, Texas 78734**

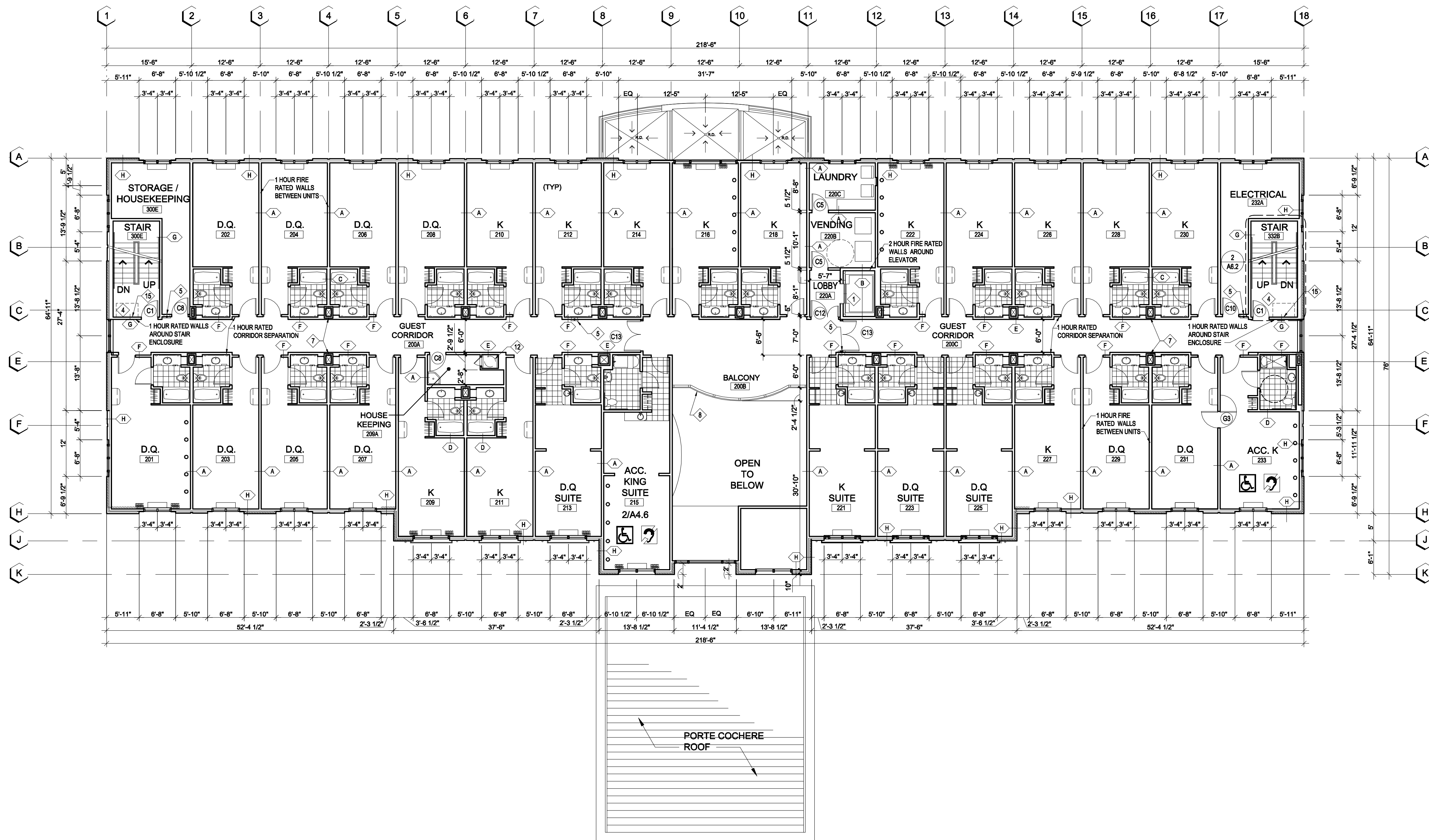


ATE

OR PERMIT
2-4-11

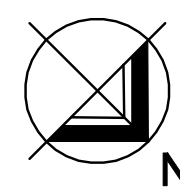
1003

A1.2



2nd FLOOR PLAN

SCALE 3/32" = 1'-0"



M. J. [Signature]
2/4/11